

WESTEN



QUASAR WESTEN

SPARE PARTS CATALOGUE

- MARCH 2005 -

COME SI CONSULTA IL CATALOGO RICAMBI

Dopo le tavole esplosi caldaie si trovano le liste dei componenti delle caldaie, suddivise in varie colonne, con il seguente significato:

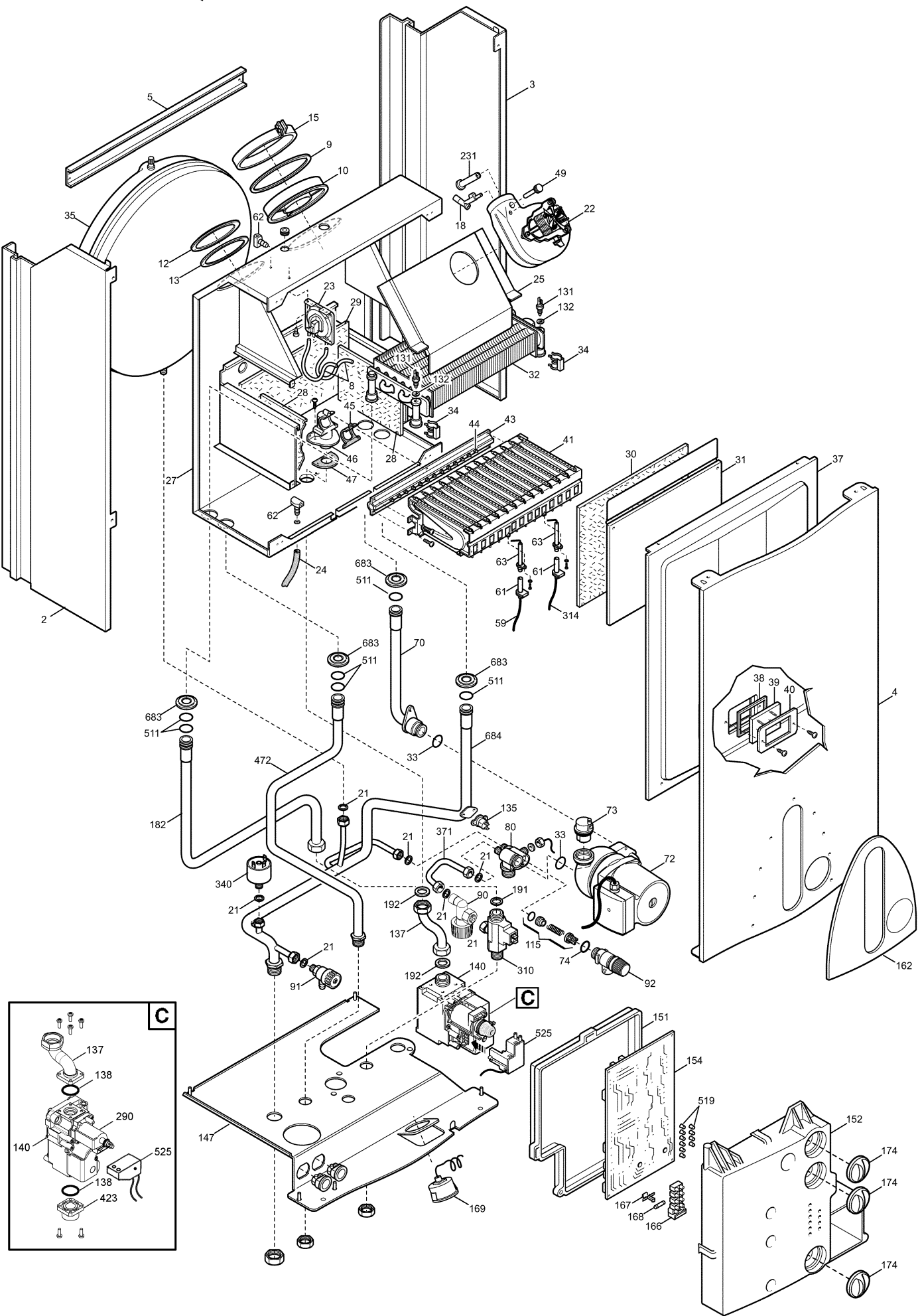
Pos.	Numero di identificazione del componente nella tavola esploso della caldaia.
Descrizione	Breve descrizione del componente.
Code	Codice WESTEN del componente.
Tab. XX	XX è il numero della tavola esploso caldaia riferita al modello in esame.
From serial number	Data (anno e settimana) di inizio produzione di un componente (prime quattro cifre della targa matricola caldaia). Esempio: B005: anno 2000 (B indica il decennio 2000-2009; 0 indica l'anno) - 5^a settimana . Se la casella è vuota significa che il componente è in uso dall'inizio produzione del modello di caldaia.
To serial number	Data (anno e settimana) di fine produzione di un componente (prime quattro cifre della targa matricola caldaia). Esempio: B012: anno 2000 – 12^a settimana (N.B. la data di fine produzione è da considerarsi indicativa). Se la casella è vuota significa che il componente è ancora in uso.
Interchangeable	Intercambiabilità tra nuovo componente entrato in produzione e vecchio componente uscito dalla produzione. YES: il nuovo componente è intercambiabile con quello vecchio. NO: il nuovo componente <u>non</u> è intercambiabile con quello vecchio.

HOW TO READ THE SPARE PARTS CATALOGUE

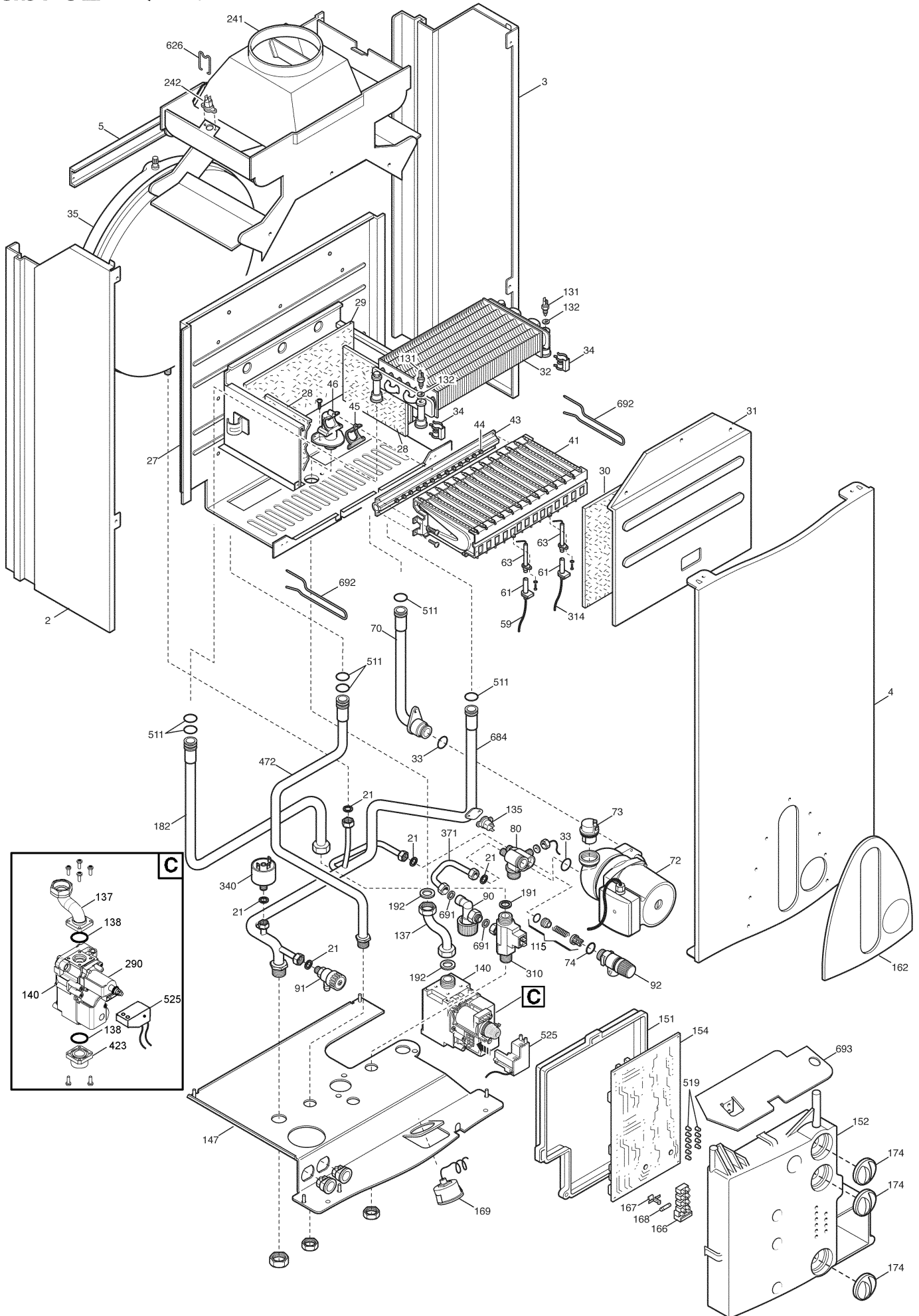
In the spare part catalogue, after the exploded diagrams, there are the components lists of the boilers; this is the meaning of the different columns:

Pos.	Identification number of the component in the exploded diagram of the boiler.
Description	Short description of the component.
Code	WESTEN code of the component.
Tab. XX	XX is the exploded diagram number of the boiler taken into consideration.
From serial number	Date (year and week) identifying the beginning of production of a component (taken from the serial number of the boiler). e.g. B005: year 2000 (B identifies the decade 2000-2009; 0 identifies the year) – 5th week . If the box is empty, the component is in use from the beginning of production of the boiler.
To serial number	Date (year and week) identifying the end of production of a component (taken from the serial number of the boiler). e.g. B012: year 2000 (B identifies the decade 2000-2009; 0 identifies the year) – 12th week . If the box is empty, the component is still in use.
Interchangeable	It identifies the interchangeability between the new component and the old one. YES: components are interchangeable. NO: components are <u>not</u> interchangeable.

Tab. 01 QUASAR 24F



Tab. 02 QUASAR 24



QUASAR WESTEN

1/3/05

BY14362489701 - QUASAR 24F WESTEN
 BY1436248972 - QUASAR 24F WESTEN
 BY1432248970 - QUASAR 24 WESTEN
 BY1432248971 - QUASAR 24 WESTEN

Pos	Description	Code	Tab. 01	Tab. 01	Tab. 02	Tab. 02	From serial number	To serial number	Inter-changeable	Note
2	LEFT PANEL ASSEMBLY	5663680	•	•						
2	LEFT PANEL ASSEMBLY	5668310			•	•				
3	RIGH PANEL ASSEMBLY	5663670	•	•						
3	RIGH PANEL ASSEMBLY	5668300			•	•				
4	FRONTAL PANEL	5113850	•	•	•	•				
5	FRONTAL TRAVERSE	5113790	•	•	•	•				
8	AIR PRESSURE SWITCH PIPE L=270	5408080	•	•						
9	SUCTION RESTRICTOR D.80	5108700	•	•						
10	COAXIAL FLUE GASKET	5409450	•	•						
12	SUCTION CAP	5108690	•	•						
13	SUCTION CAP GASKET	5407400	•	•						
15	JOINT ASSEMBLY D. 100 L=20 (with screws)	5664050	•	•						
18	FLUE PLASTIC VENTURI	5409580	•	•						
21	GASKET 6,1X12X1,5 WRC	5402050	•	•	•	•				
22	FAN 1 SPEED	5663810	•	•						
23	FAN PRESSURE SWITCH	5663820	•	•						
24	COMPENSATION PIPE L=130	5407930	•	•						
25	CONVEYOR	5113800	•	•						
25	CONVEYOR ASSEMBLY	5668420			•	•				
27	COMBUSTION CHAMBER ASSEMBLY	5663650	•	•						
27	COMBUSTION CHAMBER ASSEMBLY	5668290			•	•				
28	LATERAL INSULATING PANEL	5212210	•	•					YES	
28	LATERAL INSULATING PANEL	5213210	•	•						
28	LATERAL INSULATING PANEL	5212510			•	•			YES	
28	LATERAL INSULATING PANEL	5213220			•	•				
29	REAR INSULATING PANEL	5212220	•	•	•	•			YES	
29	REAR INSULATING PANEL	5213280	•	•	•	•				
30	FRONTAL INSULATING PANEL (FF)	5212260	•	•					YES	
30	FRONTAL INSULATING PANEL (FF)	5213370	•	•						
30	FRONTAL INSULATING PANEL (FF)	5212540			•	•			YES	
30	FRONTAL INSULATING PANEL (FF)	5213380			•	•				
31	COMB. CHAMBER PANEL	5113820	•	•						
31	COMB. CHAMBER PANEL	5114290			•	•				
32	BI-THERMAL HEAT EXCHANGER	5663720	•	•	•	•				
32	BI-THERMAL HEAT EXCHANGER + O-RING	616170	•	•	•	•				
33	O-RING 22X3 EPDM	5403130	•	•	•	•				
34	PRIMARY EXCHANGER CLIPS	5113650	•	•	•	•				
35	EXPANSION VESSEL 8	5663880	•	•						
35	EXPANSION VESSEL 7	5668370			•	•				
37	SEALED CHAMBER FRONT PANEL	5663830	•	•						
38	PILOT SIGHT GLASS GASKET	5401610	•	•						
39	PILOT SIGHT GLASS	5203930	•	•						
40	PILOT SIGHT FRAME	5103360	•	•						
41	BURNER ASSEMBLY (13 ELEMENTS)	5663710	•	•	•	•				
43	GAS RAMP WITH INJECTORS (N.G. D.1,28)	612960	•	•						
43	GAS RAMP WITH INJECTORS (N.G. D.1,18)	615260			•	•				
44	L.P.G. INJECTORS KIT	5666390	•	•	•	•				
44	NATURAL GAS INJECTORS KIT	5666400	•	•						
44	NATURAL GAS INJECTORS KIT	5669460			•	•				
45	GAS RAMP GASKET	5407940	•	•	•	•				
46	GAS RAMP CONNECTING FLANGE	5211030	•	•	•	•				
47	GASKET (GAS RAMP/SEALED CHAMBER)	5404760	•	•						
49	HOSE ADAPTER CAP	5409520	•	•						
59	IGNITION ELECTRODE CABLE	8419050	•	•	•	•				
61	ELECTRODE PROTECTION CAP	5407830	•	•	•	•				
62	SEALED CHAMBER HOSE ADAPTER	5409570	•	•						
63	IGNITION ELECTRODE	8422570	•	•	•	•				
70	PIPE ASSEMBLY (PUMP/EXCHANGER)	5663730	•	•						
70	PIPE ASSEMBLY (PUMP/EXCHANGER)	5668320			•	•				
72	PUMP UP 15-50 AO (GRUNDFOS)	5655200	•	•	•	•				
73	AIR VENT VALVE WITH O-RING (CALEFFI)	607290	•	•	•	•				
74	OR 14X1,78 EP	5406360	•	•	•	•				
80	HYDRAULIC INLET GROUP	5212240	•	•	•	•				
90	FILLING TAP	5663780	•	•				B323		
90	FILLING TAP	5667980	•	•	•	•	B323		NO	
91	DRAINING TAP	5652030	•	•	•	•				
92	HYDRAULIC SAFETY VALVE WITH O.R. -3 bar-	5653690	•	•	•	•				
115	BY-PASS PLUG ASSEMBLY	5663020	•	•	•	•				
131	NTC SENSOR (HONEYWELL)	8434820	•	•	•	•				

QUASAR WESTEN

1/3/05

BY14362489701 - QUASAR 24F WESTEN
 BY1436248972 - QUASAR 24F WESTEN
 BY1432248970 - QUASAR 24 WESTEN
 BY1432248971 - QUASAR 24 WESTEN

Pos	Description	Code	Tab. 01	Tab. 01	Tab. 02	Tab. 02	From serial number	To serial number	Inter-changeable	Note
132	NTC SENSOR GASKET	5402830	•	•	•	•				
135	LIMIT THERMOSTAT 105°C	9950760	•	•	•	•				
137	GAS PIPE	5663690	•							1
137	GAS PIPE	5669650		•						2
137	GAS PIPE	5668360			•					3
137	GAS PIPE	5670420				•				4
138	O-RING 22,22x2,62	5402010		•		•				
140	GAS VALVE (SIT 845063 SIGMA)	5658830	•	•	•	•				
140	GAS VALVE (HONEYWELL VK4105M 5033)	5665220		•		•				5
147	CONNECTION TRAVERSE	5113780	•	•						
147	CONNECTION TRAVERSE	5668500	•	•	•	•				
151	ELECTRIC BOX REAR COVER	5409550	•	•	•	•				
152	PRINTED CONTROL PANEL QUASAR 24 F	5665110	•	•						
152	PRINTED CONTROL PANEL QUASAR 24	5669020			•	•				
154	P.C.B. (SIT)	5663840	•	•				B323		
154	P.C.B. (SIT)	5668020	•	•	•	•	B323		YES	
154	P.C.B. (HONEYWELL)	5669660	•	•	•	•	B406		YES	
162	PANEL PLATE	5665100	•	•						
162	PANEL PLATE	5669030			•	•				
166	TERMINAL BLOCK	8421590	•	•	•	•				
167	FUSE HOLDER	5405340	•	•	•	•				
168	FUSE (2A-250V)	9950580	•	•	•	•				
169	MANOMETER D.40 -T&G	9951330	•	•	•	•				
174	WESTEN KNOB	5409750	•	•	•	•				
182	COLD WATER PIPE ASSEMBLY	5663800	•	•						
182	COLD WATER PIPE ASSEMBLY	5668330			•	•				
191	GASKET G1/2 AFM 34	5408970	•	•	•	•				
192	GASKET G 3/4 17X24X2 WRC	5404650	•	•	•	•				
231	FLUE INTAKE	5409480	•	•						
241	DRAUGHT DIVERTER ASSEMBLY	5668420			•	•				
242	FLUE SAFETY THERMOSTAT 70°C	600870			•	•				
290	MODULATOR ASSEMBLY -VK4105M-	5665230		•		•				7
310	DHW FLOW SWITCH (BITRON)	5663770	•	•	•	•				
314	FLAME SENSING ELECTRODE CABLE	8418870	•	•	•	•				
340	SAFETY CH PRESSURE SWITCH	5663750	•	•	•	•				
371	DRAINING PIPE	5663790	•	•				B323		
371	DRAINING PIPE	5667990	•	•	•	•	B323		NO	
423	GAS VALVE CONNECTION	5210410	•	•	•	•				6
472	DHW OUTLET PIPE	5663760	•	•						
472	DHW OUTLET PIPE	5668350			•	•				
511	O-RING 17,86X2,62	5404600	•	•	•	•				
519	NEON GLASS	5407780	•	•	•	•				
525	NAC CONNECTOR (SIT)	8419060	•	•	•	•				8
525	ANSTOSS CONNECTOR	8510910		•		•				7
626	FLUE SAFETY THERMOSTAT CLIP	5114370			•	•				
683	GASKET (PIPE/SEALED CHAMBER)	5408810	•	•						
684	BY-PASS/HEATING INLET/EXCHANGER PIPE ASS.	5663740	•	•						
684	BY-PASS/HEATING INLET/EXCHANGER PIPE ASS.	5668340			•	•				
691	GASKET 9X4X3	5410320	•	•	•	•	B323			
692	PRIMARY EXCHANGER CLIPS	5114360			•	•				
693	PRINTED CONTROL PANEL PROTECTION	5114350			•	•				

9999	POWER SUPPLY WIRING	8510340	•	•						
9999	POWER SUPPLY WIRING	8510740			•	•				
9999	LOW VOLTAGE COMP. WIRING	8510350	•	•						
9999	LOW VOLTAGE COMP. WIRING	8510750			•	•				
9999	POWER SUPPLY WIRING	8510760			•	•				
9999	EARTH WIRING - SIT	8419080	•	•	•	•				
9999	POWER SUPPLY CABLE	8414620	•	•	•	•				

Note

1. To use only with SIT 845063 SIGMA gas valve (5658830)
2. To use only with Honeywell VK4105M 5033 gas valve (5665220)
3. To use only with SIT 845063 SIGMA gas valve (5658830)
4. To use only with Honeywell VK4105M 5033 gas valve (5665220)
5. To use with gas pipes 5669650 end 5670420
6. To use only with Honeywell VK4105M 5033 gas valve (5665220)
7. To use only with Honeywell VK4105M 5033 gas valve (5665220)
8. To use only with SIT 845063 SIGMA gas valve (5658830)

WESTEN

**BAXI S.p.A.
Via Trozzetti, 20
36061 BASSANO DEL GRAPPA (VI)
ITALY
Tel. +390424517111
Telefax +390424517379**